

INSTALLATION GUIDELINE

HEATING AND COOLING CEILING | GYPSUM BOARD CEILING TILE – PERFORATED AND UNPERFORATED WITH INTEGRATED CAPILLARY TUBE MAT FOR INSERTION IN T-RAILS



System partner



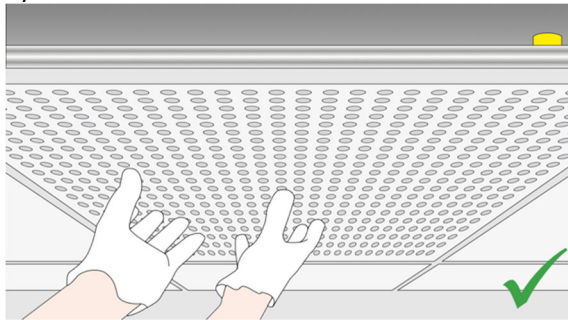
On the visible side you have a perforated or unperforated gypsum board grid ceiling with heating and cooling function for the removal or supply of sensitive heat loads largely by radiation, partly by convection.

Dry construction

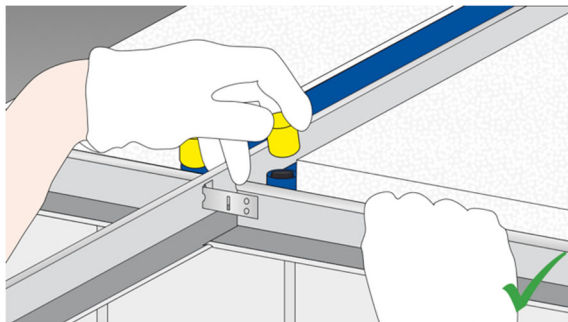
Plant engineering

1. installation of the substructure, centre-to-centre distance of the support profiles according to the panel dimensions and the manufacturer's instructions
2. installation of the piping or supply lines for the gypsum board ceiling tiles in the ceiling void
3. Wear clean cloth gloves when inserting the active gypsum board ceiling tiles.

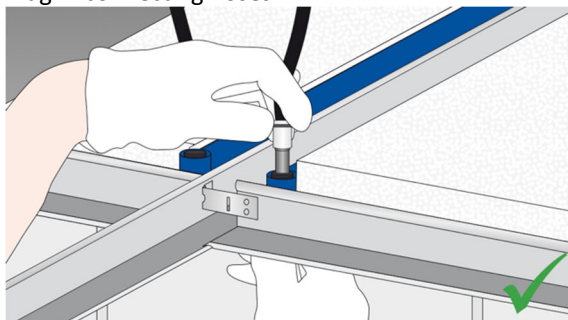
Connections of the capillary tube mats must be side by side.



4. Remove yellow protective caps from the capillary tube mats.



5. Plug in connecting hoses.



INSTALLATION GUIDELINE

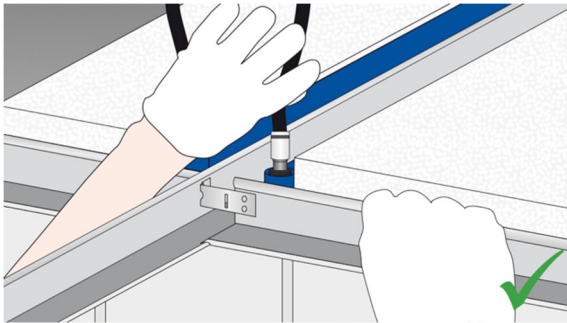
HEATING AND COOLING CEILING | GYPSUM BOARD CEILING TILE – PERFORATED AND UNPERFORATED WITH INTEGRATED CAPILLARY TUBE MAT FOR INSERTION IN T-RAILS



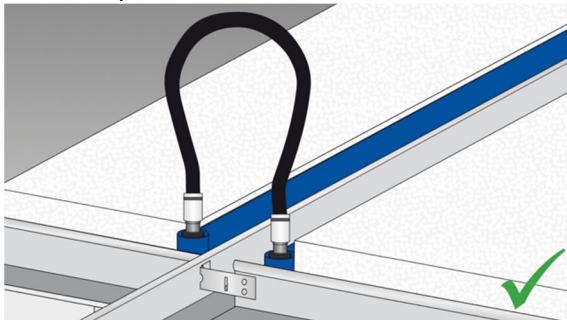
Dry construction

Plant engineering

6. Check connecting hoses for proper plug-in depth and sufficient grip.
To do so, push down tile by hand at T-profile structure.



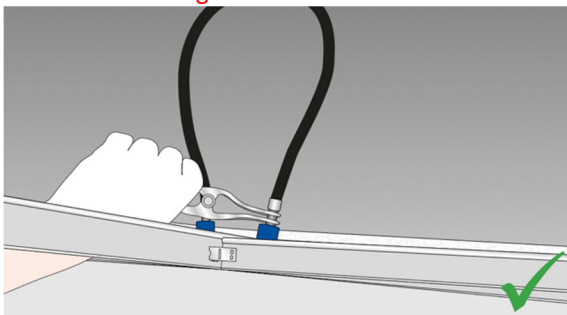
7. Connecting hoses must lie neatly in the ceiling void, without any kink or twist.



8. Connection to the ceiling sub-distributor using flexible hoses, which can be freely positioned in the ceiling void.

If hoses need to be detached, use special pliers (e.g. quick release pliers) to avoid damage.

Drain entire ceiling section beforehand!



INSTALLATION GUIDELINE

HEATING AND COOLING CEILING | GYPSUM BOARD CEILING TILE – PERFORATED AND UNPERFORATED WITH INTEGRATED CAPILLARY TUBE MAT FOR INSERTION IN T-RAILS



Dry construction

Plant engineering

- 9.** After the correct installation of the gypsum board ceiling tiles and before closing the ceiling, the system shall be subjected to an initial leak test with 3 bar compressed air for at least one hour.

The pressure must be checked continuously at the pressure gauge and the result must be recorded in a corresponding report.
- 10.** The connection of the rooms to the piping of the overall system is done by the plant engineer, who connects the ceiling sub-distributor with the room control group or zone control group. The positioning of the ceiling sub-distributor can be adapted to the requirements by its connection with the flexible long hoses.
- 11.** Depending on the scope of performance, the zones must be filled and flushed with the system medium via the ceiling sub-distributor.
- 12.** After filling and venting, a leak test with 10 bar over 24 hours must be carried out and recorded.

Regarding filling, venting and leak test please take note of the **Clina guideline CR02** "Filling, venting and leak test".
- 13.** After the successful leak tests first with air and then with liquid medium, the ceiling can be completely closed with the inactive tiles.