

OPTIPANEL 15 (UNPERFORATED) - WALL

with integrated capillary tube mat OPTIMAT GB 15



System description



SYSTEM DESCRIPTION

Design

Clina OPTIPANEL 15 is a prefabricated gypsum board panel with an integrated capillary tube mat. The OPTIPANEL 15 are screwed onto a wooden or metal stud frame. On the visible side there is a high-quality gypsum board wall for the removal or supply of sensitive heat loads. The water circulates noiselessly in the capillary tube mats and regulates the room temperature to a large extent via radiation, partly also via convection.

Gypsum board panel & Capillary tube mat

The OPTIPANEL 15 consists of a 12,5 mm unperforated gypsum board panel and the Clina capillary tube mat OPTIMAT GB 15.

Length & Width & Panel thickness

Clina manufactures the OPTIPANEL 15 in the dimensions 2.000 x 625 mm or 2.000 x 1.250 mm (standard).

Other, project-specific dimensions can also be delivered.

The panel thickness is 12,5 mm.

Hydraulic Connection

The connections between the OPTIPANEL 15 and the connection to the supply and return lines are made on site using a proven push-lock system with flexible hoses. Pipes and sub-distributors are housed in the wall cavity. Of course, the wall cavity can be used for other installations.

Mounting

The prefabricated OPTIPANEL 15 are screwed onto the stud frame.

The screws are screwed in through holes drilled in the factory.

Processing

According to the common rules of dry-wall. Processing of inactive areas with 12,5 mm standard gypsum board panels.

Sockets, Switches & Cables

Openings have to be taken into account in the planning phase.

Regulation

The system can be regulated room-by-room.

Fields of application

Suitable for the modern interior design of rooms in office buildings or public buildings, whether new construction or renovation.

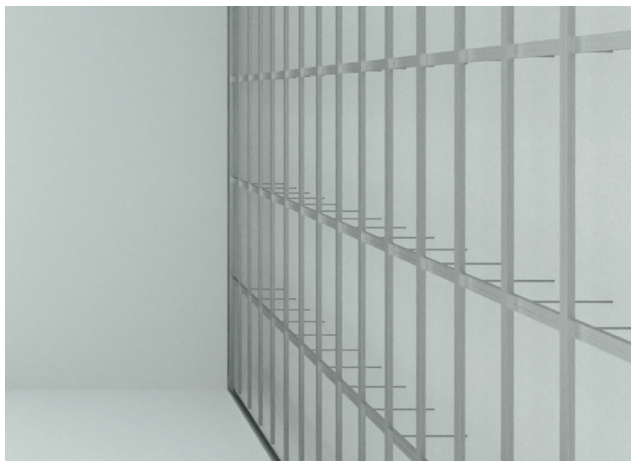
OPTIPANEL 15 (UNPERFORATED) - WALL

with integrated capillary tube mat OPTIMAT GB 15



System description

STRUCTURE



The prefabricated OPTIPANEL 15 are screwed onto the stud frame. The screws are screwed in through holes drilled in the factory.

The connections between the OPTIPANEL 15 and the connection to the supply and return lines are made on site using a proven push-lock system with flexible hoses.

Pipes and sub-distributors are housed in the wall cavity.

Of course, the cavity can be used for other installations.

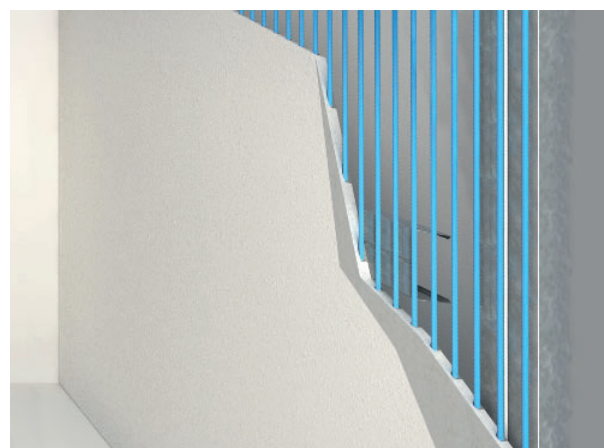
PREFABRICATED PRODUCT

In an unperforated 12,5 mm gypsum board panel, parallel slots are milled on the back at a distance of 15 mm.

The capillaries of the capillary tube mat OPTIMAT GB 15, consisting of a round mat distributor pipe (20 x 2,0 mm) and capillary tubes (4,3 x 0,8 mm), are inserted into these slots.

The distance between the capillary tubes (centre-to-centre distance) is 15 mm.

The OPTIPANEL 15 is covered with a full-surface cover paper on the back.



GENERAL INFORMATION ON CAPILLARY TUBE SYSTEMS

Clima capillary tube mats are used very successfully worldwide for heating and cooling various buildings.

The capillary tube system is extremely **comfortable**:

- noiseless temperature control
- draught-free
- high thermal comfort thanks to large-area heat transfer by radiation, the heat feels pleasantly natural, like rays of sunshine, the silent cooling creates a healthy indoor climate
- fast reaction

Advantages compared to classic single-pipe systems:

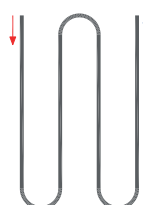
- low pressure loss
- very even temperature distribution and transmission
- larger exchange surface
- ideal for the use of environmental energy due to very small temperature differences between system and room temperature
- in combination with the heat pump, best COP values can be achieved

Capillary tube mats are **safe & durable**

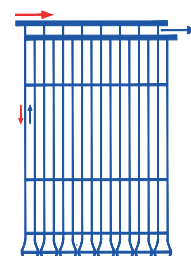
Each individual Clima capillary tube mat is subjected to a leak test before dispatch. The test pressure is 20 bar - which corresponds to approximately 10 times the operating pressure.

A 15-year extended warranty applies to all Clima mats. The expected service life is more than 50 years under normal conditions of use. All Clima capillary tube mats are produced with high-tech machines & equipment in our manufacturing plant in Berlin-Brandenburg.

Single-pipe system



Capillary tube system



OPTIPANEL 15 (UNPERFORATED) - WALL

with integrated capillary tube mat OPTIMAT GB 15



System description

ADVANTAGES

Cooling and heating with one system

In most buildings, the heat requirement to be covered is so low due to the well-insulated building envelope that capillary tube mats integrated invisibly in the gypsum board wall not only provide excellent and silent cooling in summer, but can also be used to heat very comfortably and energy-efficient in the cold season.

High degree of prefabrication

Factory prefabrication ensures quality, function and thermal performance.

Easy retrofitting

Can be screwed onto an existing stud frame. The hydraulic connection is made in the wall cavity.

Quick and easy installation

The hydraulic connection is made using a proven push-lock system.

This design can be installed completely in the drywall work, which ensures a smooth process on the construction site.

Individual room control

The temperature can be regulated room-by-room.

VALUES



HEATING CAPACITY (wall)

110,0 W/m²

$\Delta T = 15$ K, active mat area

93,0 W/m²

$\Delta T = 15$ K, total panel surface



COOLING CAPACITY (wall)

73,0 W/m²

$\Delta T = 10$ K, active mat area

62,0 W/m²

$\Delta T = 10$ K, total panel surface



ACOUSTICS (wall)

sound insulation values
according to manufacturer's specifications
are maintained

WALL STRUCTURE:

depending on kind of stud frame
plus **12,5 mm** OPTIPANEL 15

SYSTEM WEIGHT:

OPTIPANEL 15 (filled with water)
11 kg/m²

PRESSURE STAGE:

PN 10

REFERENCES

Please note the following documents for further information

- OPTIPANEL 15-wall System data sheet
- OPTIPANEL 15 Product data sheet
- OPTIPANEL Installation guideline
- Website: www.clina.de

Data sheets regarding other application possibilities with OPTIPANEL 15

- OPTIPANEL 15-ceiling System description
- OPTIPANEL 15-ceiling System data sheet
- Gypsum board ceilings Performance values

CONTACT

Clina Heiz- und Kühlelemente GmbH
Eichhorster Weg 80 | 13435 Berlin

Fon: + 49 30 402054 – 0
Fax: + 49 30 402054 – 19

www.clina.de
info@clina.de