



CONNECTION COMPONENTS



HEATING &
COOLING MATS

PREFABRICATED
PRODUCTS

TUBES, SUPPLY &
RETURN LINES

CONNECTION
COMPONENTS

FITTINGS

MEASUREMENT &
CONTROL TECHNOLOGY

SYSTEM SEPERATION
PLASTIC MANIFOLD

FIXING
MATERIAL

TOOLS &
ASSEMBLY KIT

6 Push-Lock Connection System

The Clina connection system consists of flexible hoses and Clina push-lock connections. By inserting the flexible hoses, the capillary tube mats are easily and securely connected with the supply and return lines of the piping system. At present more than **2 million** Clina push-lock connections are Europe-wide in use.

Clina connection systems consist of guide sleeves and cartridges which were exclusively developed for Clina. The claw fastener ensures that these connections, which are under pressure, do not loosen or become leaky even after years of operational service. A guide sleeve ensures the correct seating of the hose nipple of the flexible hose. The nipples of the flexible hoses are made of rust-proof metal.

An O-ring is used for sealing purposes and this prevents water from coming into contact with the guide sleeve. The O-ring cannot be pressed out of its position even if the hose nipples are pressed in a diagonally angle.

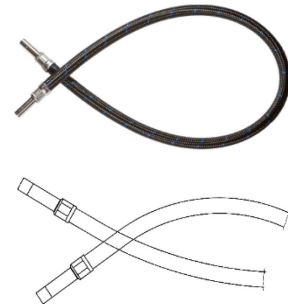
Clina connections are connected to the mat distributor pipe of the Clina capillary tube mat by socket welding or inside socket welding.

6.1 Flexible Hoses

6.1.1 FLEXIBLE HOSES 10

TECHNICAL DATA

DESIGNATION	flexible hoses for push-lock system 10 mm
ITEM NO.	SNY 10.
DN	10
HOSE NIPPLE Ø OUTSIDE	10 mm (on both sides)
LENGTH	500 mm, 800 mm, 1200 mm, 5000 mm
PRESSURE STAGE PN	10
MATERIAL/SURFACE	hose nipple: nickel-plated brass inner hose: EPDM coating: high pressure synthetic material

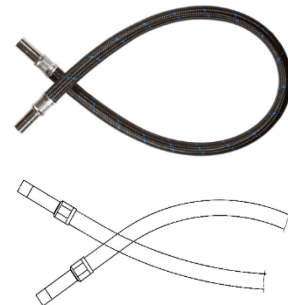


LENGTH	ITEM NO.
500 mm	SNY 10.0500
800 mm	SNY 10.0800
1200 mm	SNY 10.1200
5000 mm	SNY 10.5000

6.1.2 FLEXIBLE HOSES 15

TECHNICAL DATA

DESIGNATION	flexible hoses for push-lock system 15 mm
ITEM NO.	SNY 15.
DN	13
HOSE NIPPLE Ø OUTSIDE	15 mm (on both sides)
LENGTH	500 mm, 800 mm, 1200 mm
PRESSURE STAGE PN	10
MATERIAL/ SURFACE	hose nipple: nickel-plated brass inner hose: EPDM coating: high pressure synthetic material



LENGTH	ITEM NO.
500 mm	SNY 15.0500
800 mm	SNY 15.0800
1200 mm	SNY 15.1200

6.2 Push-Lock Connections

6.2.1 Push-Lock Connections 10 mm

suitable for Clina flexible hoses 10

STRAIGHT CONNECTION WITH INSIDE SOCKET

TECHNICAL DATA

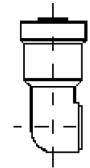
DESCRIPTION	straight connection with inside socket for PP-pipe 20 x 2,00 mm, for inside socket welding
ITEM NO.	FGAI 20/10
PUSH-LOCK SYSTEM	10 mm
Ø OUTSIDE	20 mm
MATERIAL/COLOUR	PP-R/blue



SIDE CONNECTION WITH INSIDE SOCKET

TECHNICAL DATA

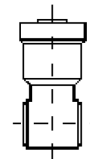
DESCRIPTION	side connection with inside socket for PP-pipe 20 x 2,00 mm, for inside socket welding
ITEM NO.	FSAI 20/10
PUSH-LOCK SYSTEM	10 mm
Ø OUTSIDE	20 mm
MATERIAL/COLOUR	PP-R/blue



MIDDLE CONNECTION WITH INSIDE SOCKET

TECHNICAL DATA

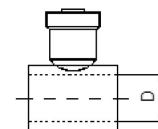
DESCRIPTION	middle connection with inside socket for PP-pipe 20 x 2,00 mm, for inside socket welding
ITEM NO.	FMAI 20/10
PUSH-LOCK SYSTEM	10 mm
Ø OUTSIDE	20 mm
MATERIAL/COLOUR	PP-R/blue



SOCKET CONNECTION

TECHNICAL DATA

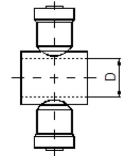
DESCRIPTION	socket connection for PP-pipe da = 20 mm, for heating element socket welding
ITEM NO.	FMA 20/10
PUSH-LOCK SYSTEM	10 mm
Ø OUTSIDE	20 mm
MATERIAL/COLOUR	PP-R/blue



DOUBLE SOCKET CONNECTION

TECHNICAL DATA

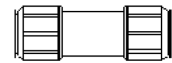
DESCRIPTION	double socket connection for PP-pipe da = 20 mm, for heating element socket welding
ITEM NO.	FMDA 20/10
PUSH-LOCK SYSTEM	10 mm
Ø OUTSIDE	20 mm
MATERIAL/COLOUR	PP-R/blue



PUSH-LOCK CONNECTION, STRAIGHT 10

TECHNICAL DATA

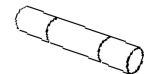
DESCRIPTION	push-lock connection straight 10 mm, suitable for Clina flexible hoses 10
ITEM NO.	FSVG 10
PUSH-LOCK SYSTEM	10 mm
Ø INSIDE	10 mm
LENGTH	45 mm
MATERIAL/COLOUR	plastic/white



DOUBLE NIPPLE 10

TECHNICAL DATA

DESCRIPTION	double nipple 10 mm
ITEM NO.	FDON 10
PUSH-LOCK SYSTEM	10 mm
DN	8
Ø OUTSIDE	10 mm
LENGTH	45 mm
MATERIAL/SURFACE	nickel-plated brass



SCREW-IN CONNECTOR, STRAIGHT 10 X 1/2" EXTERNAL SCREW THREAD

TECHNICAL DATA

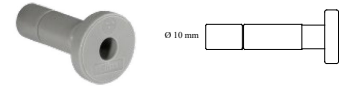
DESCRIPTION	screw-in connector with retaining ring, straight 10 x 1/2" external screw thread, suitable for Clina flexible hoses 10
ITEM NO.	FSVAGM 10
PUSH-LOCK SYSTEM	10 mm
Ø INSIDE	10 mm
MATERIAL/SURFACE	brass



PLUG 10

TECHNICAL DATA

DESCRIPTION	plug 10 mm for closing push-lock connections 10 mm
ITEM NO.	FST 10
PUSH-LOCK SYSTEM	10 mm
Ø OUTSIDE	10 mm
MATERIAL/COLOUR	plastic/grey



6.2.2 Push-Lock Connections 15 mm suitable for Clina flexible hoses 15

STRAIGHT CONNECTION WITH RETAINING RING

TECHNICAL DATA

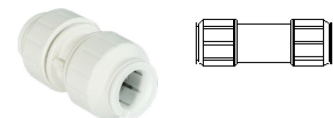
DESCRIPTION	straight connection with retaining ring, with pipe connection for heating element socket welding, suitable for Clina flexible hoses 15
ITEM NO.	FGAS 20/15
PUSH-LOCK SYSTEM	15 mm
CONNECTOR Ø OUTSIDE	20 mm
MATERIAL/COLOUR	PP-R/blue



PUSH-LOCK CONNECTION 15

TECHNICAL DATA

DESCRIPTION	push-lock connection 15, suitable for Clina flexible hoses 15
ITEM NO.	FSVG 15
PUSH-LOCK SYSTEM	15 mm
Ø INSIDE	15 mm
LENGTH	60 mm
MATERIAL/COLOUR	plastic/white



DOUBLE NIPPLE 15

TECHNICAL DATA

DESCRIPTION	double nipple 15
ITEM NO.	FDON 15
PUSH-LOCK SYSTEM	15 mm
DN	13
Ø OUTSIDE	15 mm
LENGTH	65 mm
MATERIAL/SURFACE	nickel-plated brass



SCREW-IN CONNECTOR, STRAIGHT 15 X 1/2" EXTERNAL SCREW THREAD

TECHNICAL DATA

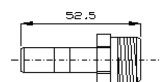
DESCRIPTION	screw-in connector with retaining ring, straight 15 x 1/2" external screw thread, suitable for Clina flexible hoses 15
ITEM NO.	FSVAGM 15
PUSH-LOCK SYSTEM	15 mm
Ø INSIDE	15 mm
MATERIAL/SURFACE	brass



TRANSITION NIPPLE EUROCONUS STRAIGHT

TECHNICAL DATA

DESCRIPTION	transition nipple Euroconus straight, for pipe connections with clamp ring connection 3/4" Euroconus
ITEM NO.	FSG 2015
PUSH-LOCK SYSTEM	15 mm
Ø OUTSIDE	15 mm
MATERIAL/SURFACE	nickel-plated brass



PLUG 15

TECHNICAL DATA

DESCRIPTION	plug 15 mm for closing push-lock connections 15 mm
ITEM NO.	FST 15
PUSH-LOCK SYSTEM	15 mm
Ø OUTSIDE	15 mm
MATERIAL/COLOUR	plastic/blue

